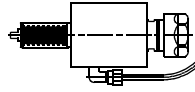


SCHAUBLIN 250-CNC

Higher precision : 0,005 mm runout

SC.000.250 4100.00164 **Schaublin Reference**

AXIAL

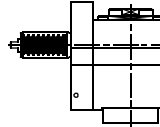


ESX 20
RATIO 1:1
6000 RPM MAX



SC.011.250 4100.00900

RADIAL SET-BACK

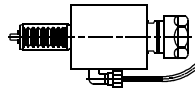


ESX 20
RATIO 1:1
6000 RPM MAX

SCHAUBLIN 125-CCN

SC.000.125 4100.00164

AXIAL

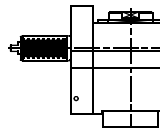


ESX 20
RATIO 1:1
6000 RPM MAX



SC.011.125 4100.00166

RADIAL SET-BACK

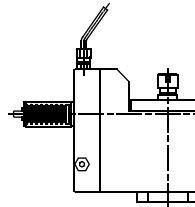


ESX 20
RATIO 1:1
6000 RPM MAX



SC.013.125 4100.00179

RADIAL SET-BACK SPEEDER

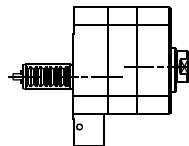


ESX 12
RATIO 1:3
15000 RPM MAX



SC.026.125 4100.00177

AXIAL SPEEDER

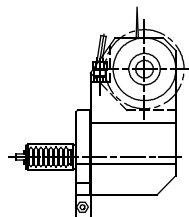


ESX 12
RATIO 1:3.13
15000 RPM MAX



SC.030.125 4100.00806

SAW CUTTER



ARBOR
RATIO 1:0.8
3000 RPM MAX

Tooling for : BIGLIA - CMZ - DOOSAN - DUPLOMATIC - EMCO - HAAS - INDEX - MAZAK - MIYANO - MORI SEIKI - NAKAMURA - OKUMA - SAUTER - SCHAUBLIN - SPINNER - ETC.

MADAULA GROUP
Chicago - São Paulo
Barcelona - Bologna - Waghäusel

hello@madaula.com
Specials : welcome



SCHAUBLIN 140-CNC

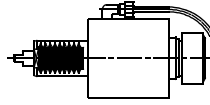
Higher precision : 0,005 mm runout

Schaublin
Reference

SC.000.140

4100.00550

AXIAL



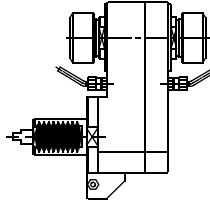
ESX 25
RATIO 1:1
6000 RPM MAX



SC.004.140

4100.00840

AXIAL DOUBLE

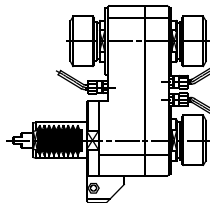


ESX 25 x2
RATIO 1:1
6000 RPM MAX

SC.004.140/3

4100.00845

AXIAL TRIPLE



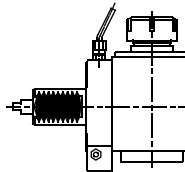
ESX 25 x3
RATIO 1:1
6000 RPM MAX



SC.010.140

4100.00800

RADIAL



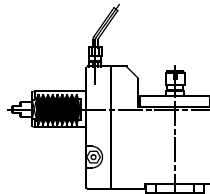
ESX 25
RATIO 1:1
6000 RPM MAX



SC.013.140

4100.00801

**RADIAL SET-BACK
SPEEDER**



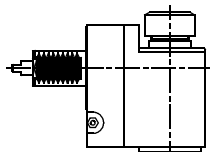
ESX 12
RATIO 1:3
18.000 RPM MAX



SC.014.140

4100.00802

**RADIAL SET-BACK
REDUCER**



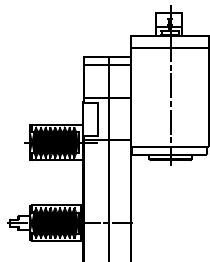
ESX 25
RATIO 2:1
3000 RPM MAX



SC.054.140

4100.00810

RADIAL "Y AXIS"



ESX 20
RATIO 1:1
6000 RPM MAX



Tooling for : BIGLIA - CMZ - DOOSAN - DUPLOMATIC - EMCO - HAAS - INDEX - MAZAK - MIYANO - MORI SEIKI - NAKAMURA - OKUMA - SAUTER - SCHAUBLIN - SPINNER - ETC.

MADAULA GROUP

Chicago - São Paulo

Barcelona - Bologna - Waghäusel

hello@madaula.com

Specials : welcome



SCHAUBLIN 140-CNC

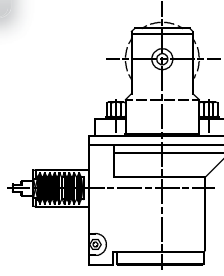
Higher precision : 0,005 mm runout

Schaublin
Reference

SC.015.140

4100.00806

GEAR HOBBING



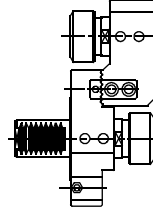
ARBOR
RATIO 1:1
3000 RPM MAX



SC.025.140

4100.00830

**AXIAL STATIC
DOUBLE**



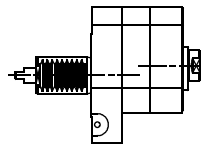
ESX 25 x2



SC.026.140

4100.00803

**AXIAL
OFFSET SPEEDER**

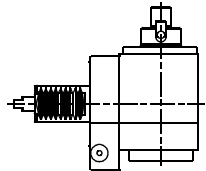


ESX 12
RATIO 1:3.13
15.000 RPM MAX

SC.037.140

4100.00805

RADIAL SAW-MILL



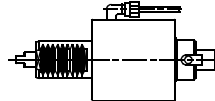
ARBOR
RATIO 1:1
6000 RPM MAX



SC.038.140

4100.00804

AXIAL SAW MILL

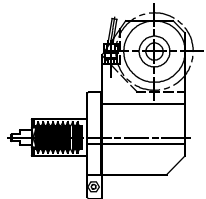


ARBOR
RATIO 1:1
6000 RPM MAX

SC.030.140

4100.00806

SAW CUTTER



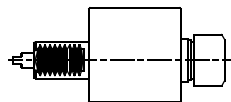
ARBOR
RATIO 1:0.8
3000 RPM MAX



SC.005.140

4100.00551

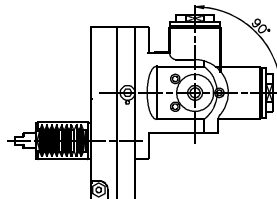
**AXIAL WITH
COOLANT THROUGH**



ESX 25
RATIO 1:1
4000 RPM MAX

SC.021.140

**RADIAL
ADJUSTABLE**



ESX 16
RATIO 1:1
6000 RPM MAX



Tooling for : BIGLIA - CMZ - DOOSAN - DUPLOMATIC - EMCO - HAAS - INDEX - MAZAK - MIYANO - MORI SEIKI - NAKAMURA - OKUMA - SAUTER - SCHAUBLIN - SPINNER - ETC.

MADAULA GROUP

Chicago - São Paulo

Barcelona - Bologna - Waghäusel

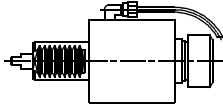

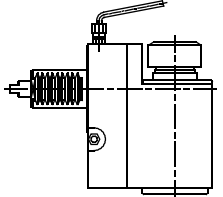

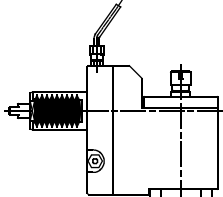

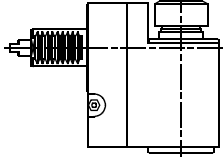

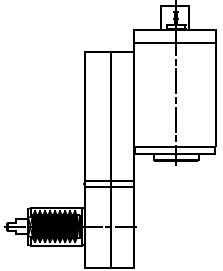

hello@madaula.com

Specials : welcome



SCHAUBLIN 180-CCN

Higher precision : 0,005 mm runout

SC.000.180	<p>Schaublin Reference 4100.00550</p>	AXIAL		<p>ESX 25 RATIO 1:1 6000 RPM MAX</p>	
SC.011.180	4100.00850	RADIAL SET-BACK		<p>ESX 25 RATIO 1:1 6000 RPM MAX</p>	
SC.013.180	4100.00851	RADIAL SET-BACK SPEEDER		<p>ESX 12 RATIO 1:3 15.000 RPM MAX</p>	
SC.014.180	4100.00852	RADIAL SET-BACK REDUCER		<p>ESX 25 RATIO 2:1 3000 RPM MAX</p>	
SC.054.180	4100.00860	RADIAL "Y AXIS"		<p>ESX 20 RATIO 1:1 6000 RPM MAX</p>	

Tooling for : BIGLIA - CMZ - DOOSAN - DUPLOMATIC - EMCO - HAAS - INDEX - MAZAK - MIYANO - MORI SEIKI - NAKAMURA - OKUMA - SAUTER - SCHAUBLIN - SPINNER - ETC.

MADAULA GROUP
Chicago - São Paulo
Barcelona - Bologna - Waghäusel

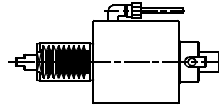
hello@madaula.com
Specials : welcome



SCHAUBLIN 180-CCN

Higher precision : 0,005 mm runout

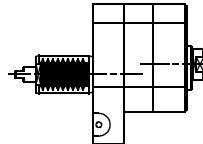
SC.038.180 **Schaublin Reference**
4100.00804 **AXIAL SAW-MILL**



ARBOR
RATIO 1:1
6000 RPM MAX



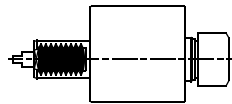
SC.026.180 4100.00853 **AXIAL SPEEDER**



ESX 12
RATIO 1:3.13
15.000 RPM MAX



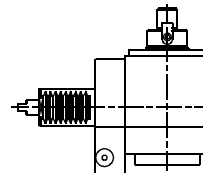
SC.005.180 4100.00551 **AXIAL WITH COOLANT THROUGH**



ESX 25
RATIO 1:1
4000 RPM MAX



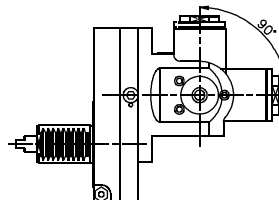
SC.037.180 **RADIAL SAW-MILL**



ARBOR
RATIO 1:1
6000 RPM MAX



SC.021.180 **RADIAL ADJUSTABLE**



ESX 20
RATIO 1:1
6000 RPM MAX



Tooling for : BIGLIA - CMZ - DOOSAN - DUPLOMATIC - EMCO - HAAS - INDEX - MAZAK - MIYANO - MORI SEIKI - NAKAMURA - OKUMA - SAUTER - SCHAUBLIN - SPINNER - ETC.

MADAULA GROUP
Chicago - São Paulo
Barcelona - Bologna - Waghäusel

hello@madaula.com
Specials : welcome

