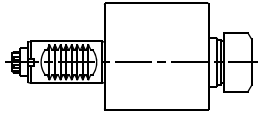


SAUTER VDI-30 DIN-5480

Higher precision : 0,005 mm runout

SA.000.3080

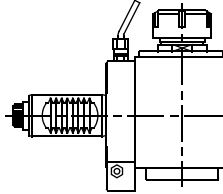
AXIAL



ER-25
RATIO 1:1
8000 RPM MAX

SA.010.3080

RADIAL

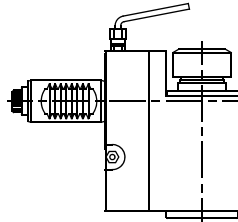


ER-25
RATIO 1:1
6000 RPM MAX



SA.011.3080

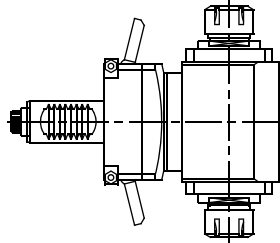
RADIAL SET-BACK



ER-25
RATIO 1:1
6000 RPM MAX

SA.008.3080

RADIAL DOUBLE OUTPUT

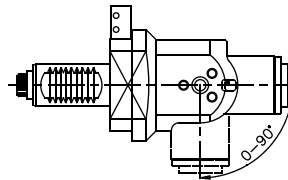


ER-25 / ER-25
RATIO 1:1
6000 RPM MAX



SA.021.3080

RADIAL ADJUSTABLE



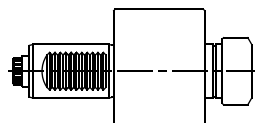
ER-16
RATIO 1:1
6000 RPM MAX



SAUTER VDI-40 DIN-5480

SA.000.4080

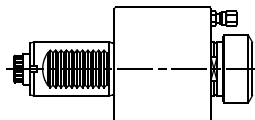
AXIAL



ER-32
RATIO 1:1
5000 RPM MAX

SA.005.4080

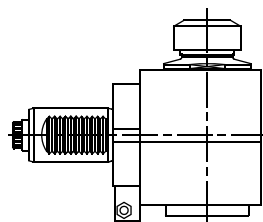
AXIAL WITH HIGH PRESSURE COOLANT THROUGH



ER-32
RATIO 1:1
5000 RPM MAX

SA.010.4080

RADIAL



ER-32
RATIO 1:1
5000 RPM MAX



Tooling for : BIGLIA - CMZ - DOOSAN - DUPLOMATIC - EMCO - HAAS - INDEX - MAZAK - MIYANO - MORI SEIKI - NAKAMURA - OKUMA - SAUTER - SCHAUBLIN - SPINNER - ETC.

MADAULA GROUP
Chicago - São Paulo
Barcelona - Bologna - Waghäusel

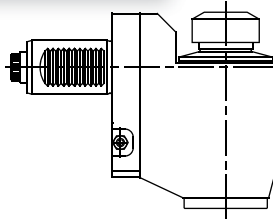
hello@madaula.com
Specials : welcome



SAUTER VDI-40 DIN-5480

SA.011.4080

RADIAL SET-BACK



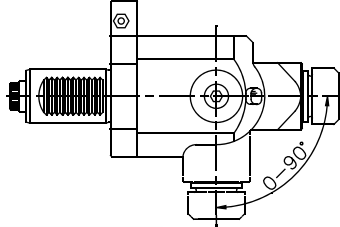
Higher precision : 0,005 mm runout

ER-32
RATIO 1:1
5000 RPM MAX



SA.021.4080

RADIAL ADJUSTABLE

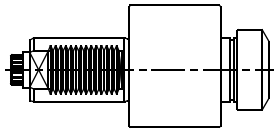


ER-25
RATIO 1:1
5000 RPM MAX

SAUTER VDI-50 DIN-5480

SA.000.5080

AXIAL

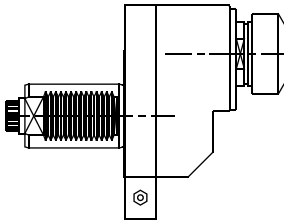


ER-40
RATIO 1:1
4000 RPM MAX



SA.001.5080

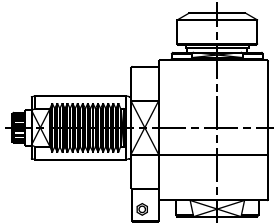
AXIAL OFFSET



ER-40
RATIO 1:1
4000 RPM MAX

SA.010.5080

RADIAL

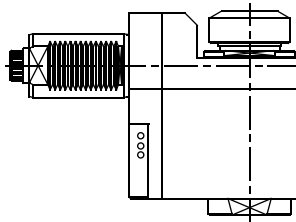


ER-40
RATIO 1:1
4000 RPM MAX



SA.011.5080

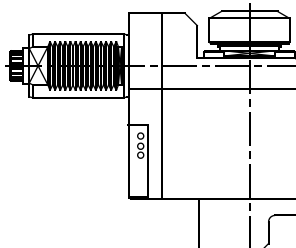
RADIAL SET-BACK



ER-40
RATIO 1:1
4000 RPM MAX

SA.017.5080

RADIAL SET-BACK WITH HIGH PRESSURE COOLANT THROUGH



ER-40
RATIO 1:1
4000 RPM MAX



Tooling for : BIGLIA - CMZ - DOOSAN - DUPLOMATIC - EMCO - HAAS - INDEX - MAZAK - MIYANO - MORI SEIKI - NAKAMURA - OKUMA - SAUTER - SCHAUBLIN - SPINNER - ETC.

MADAULA GROUP
Chicago - São Paulo
Barcelona - Bologna - Waghäusel

hello@madaula.com

Specials : welcome

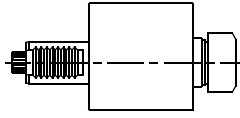


SAUTER VDI-30 DIN-5482

Higher precision : 0,005 mm runout

SA.000.3082

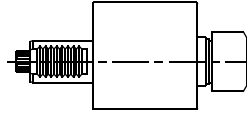
AXIAL



ER-25
RATIO 1:1
6000 RPM MAX

SA.005.3082

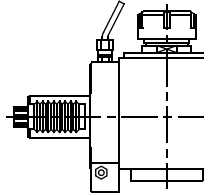
**AXIAL WITH
HIGH PRESSURE
COOLANT THROUGH**



ER-25
RATIO 1:1
6000 RPM MAX

SA.010.3082

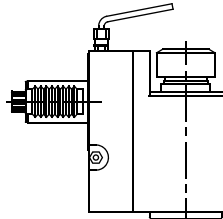
RADIAL



ER-25
RATIO 1:1
6000 RPM MAX

SA.011.3082

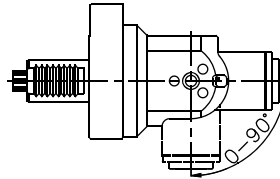
**RADIAL
SET-BACK**



ER-25
RATIO 1:1
6000 RPM MAX

SA.021.3082

**RADIAL
ADJUSTABLE**



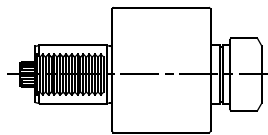
ER-16
RATIO 1:1
6000 RPM MAX



SAUTER VDI-40 DIN-5482

SA.000.4082

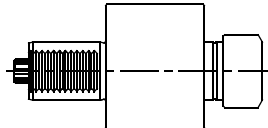
AXIAL



ER-32
RATIO 1:1
5000 RPM MAX

SA.005.4082

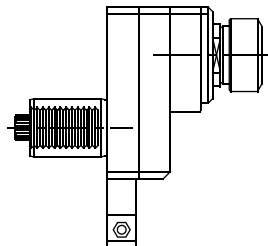
**AXIAL WITH
HIGH PRESSURE
COOLANT THROUGH**



ER-32
RATIO 1:1
5000 RPM MAX

SA.001.4082

**AXIAL
OFFSET**



ER-32
RATIO 1:1
5000 RPM MAX



Tooling for : BIGLIA - CMZ - DOOSAN - DUPLOMATIC - EMCO - HAAS - INDEX - MAZAK - MIYANO - MORI SEIKI - NAKAMURA - OKUMA - SAUTER - SCHAUBLIN - SPINNER - ETC.

MADAULA GROUP
Chicago - São Paulo
Barcelona - Bologna - Waghäusel

hello@madaula.com

Specials : welcome

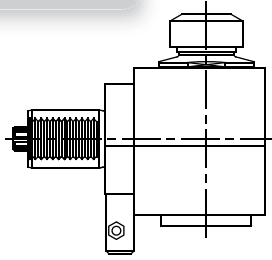


SAUTER VDI-40 DIN-5482

Higher precision : 0,005 mm runout

SA.010.4082

RADIAL

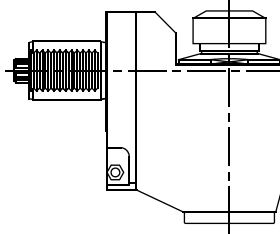


ER-32
RATIO 1:1
5000 RPM MAX



SA.011.4082

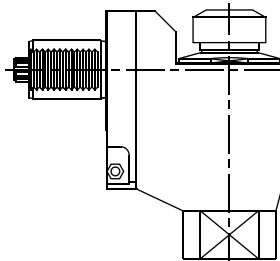
RADIAL SET-BACK



ER-32
RATIO 1:1
5000 RPM MAX

SA.017.4082

RADIAL SET-BACK WITH HIGH PRESSURE COOLANT THROUGH

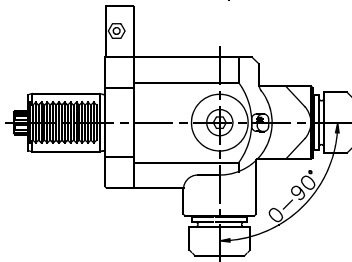


ER-32
RATIO 1:1
5000 RPM MAX



SA.021.4082

RADIAL ADJUSTABLE

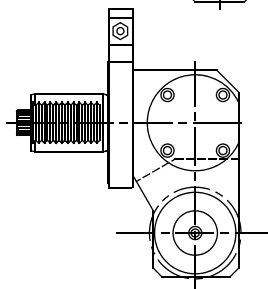


ER-25
RATIO 1:1
5000 RPM MAX



SA.030.4082

SAW-MILL REDUCER

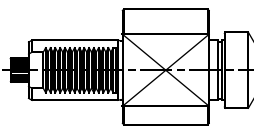


Ø 22
RATIO 2.5:1
4000 RPM MAX

SAUTER VDI-50 DIN-5482

SA.000.5082

AXIAL



ER-40
RATIO 1:1
4000 RPM MAX



Tooling for : BIGLIA - CMZ - DOOSAN - DUPLOMATIC - EMCO - HAAS - INDEX - MAZAK - MIYANO - MORI SEIKI - NAKAMURA - OKUMA - SAUTER - SCHAUBLIN - SPINNER - ETC.

MADAULA GROUP

Chicago - São Paulo

Barcelona - Bologna - Waghäusel

hello@madaula.com

Specials : welcome

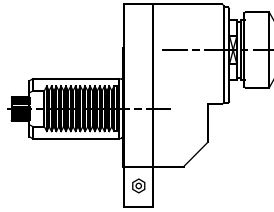


SAUTER VDI-50 DIN-5482

Higher precision : 0,005 mm runout

SA.001.5082

**AXIAL
OFFSET**

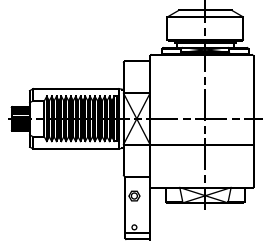


ER-40
RATIO 1:1
4000 RPM MAX



SA.010.5082

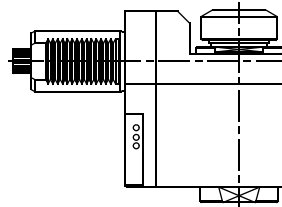
RADIAL



ER-40
RATIO 1:1
4000 RPM MAX

SA.011.5082

**RADIAL
SET-BACK**

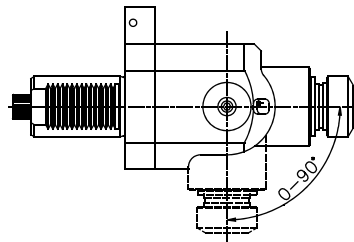


ER-40
RATIO 1:1
4000 RPM MAX



SA.021.5082

**RADIAL
ADJUSTABLE**

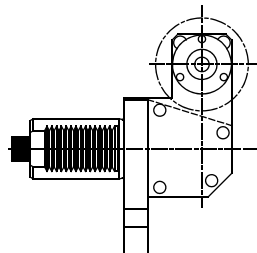


ER-32
RATIO 1:1
4000 RPM MAX



SA.030.5082

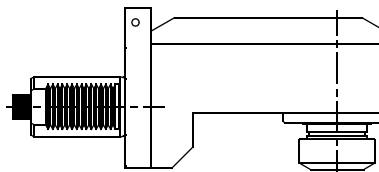
SAW-MILL



Ø 25.4
RATIO 1:1
2500 RPM MAX

SA.040.5082

**WORK INSIDE
TUBES**



ER-40
RATIO 1:1
4000 RPM MAX



Tooling for : BIGLIA - CMZ - DOOSAN - DUPLOMATIC - EMCO - HAAS - INDEX - MAZAK - MIYANO - MORI SEIKI - NAKAMURA - OKUMA - SAUTER - SCHAUBLIN - SPINNER - ETC.

MADAULA GROUP
Chicago - São Paulo
Barcelona - Bologna - Waghäusel

hello@madaula.com
Specials : welcome

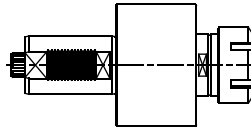


SAUTER VDI-60 DIN-5482

Higher precision : 0,005 mm runout

SA.000.6082

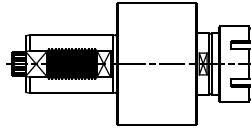
AXIAL



ER-50
RATIO 1:1
3000 RPM MAX

SA.005.6082

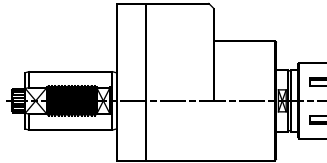
**AXIAL WITH
COOLANT THROUGH**



ER-50
RATIO 1:1
3000 RPM MAX

SA.003.6082

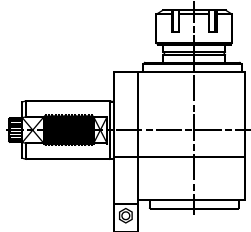
**AXIAL
REDUCER**



ER-50
RATIO 1:1
3000 RPM MAX

SA.010.6082

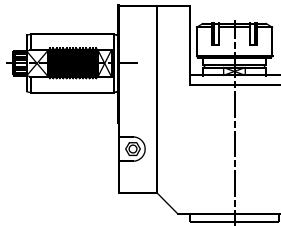
RADIAL



ER-50
RATIO 1:1
3000 RPM MAX

SA.011.6082

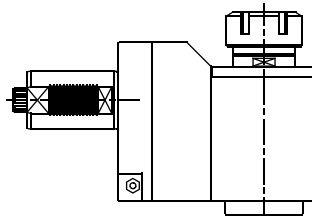
**RADIAL
SET-BACK**



ER-50
RATIO 1:1
3000 RPM MAX

SA.014.6082

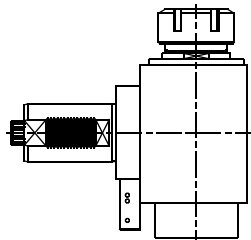
**RADIAL
REDUCER**



ER-50
RATIO 1:1
3000 RPM MAX

SA.016.6082

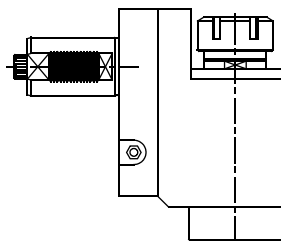
**RADIAL WITH
HIGH PRESSURE
COOLANT THROUGH**



ER-50
RATIO 1:1
3000 RPM MAX

SA.017.6082

**RADIAL SET-BACK
WITH HIGH PRESSURE
COOLANT THROUGH**



ER-50
RATIO 1:1
3000 RPM MAX



Tooling for : BIGLIA - CMZ - DOOSAN - DUPLOMATIC - EMCO - HAAS - INDEX - MAZAK - MIYANO - MORI SEIKI - NAKAMURA - OKUMA - SAUTER - SCHAUBLIN - SPINNER - ETC.

MADAULA GROUP

Chicago - São Paulo

Barcelona - Bologna - Waghäusel

hello@madaula.com

Specials : welcome

