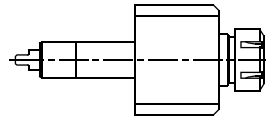


ROMI E-280

Higher precision : 0,005 mm runout

ROMI Ref.

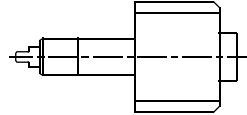
RO.000.280 S49879 **AXIAL**



ER-25
RATIO 1:1
5.000 RPM MAX.

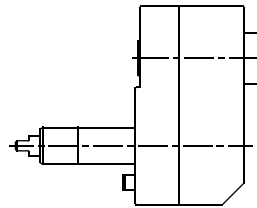


RO.000.280/HSK **AXIAL**



HSK-32
RATIO 1:1
5.000 RPM MAX.

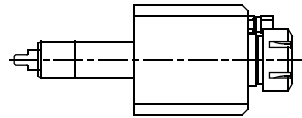
RO.001.280 S44600 **AXIAL OFFSET**



ER-25
RATIO 1:1
5.000 RPM MAX.



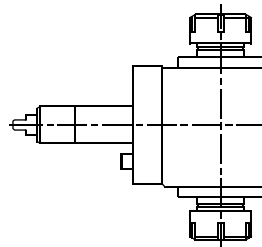
RO.005.280 **AXIAL WITH HIGH PRESSURE COOLANT THROUGH**



ER-25
RATIO 1:1
5.000 RPM MAX.



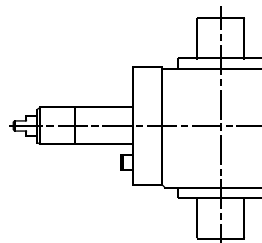
RO.008.280 S59729 **RADIAL DOUBLE OUTPUT**



ER-25 / ER-25
RATIO 1:1
5.000 RPM MAX.



RO.008.280/HSK **RADIAL DOUBLE OUTPUT**



HSK-32 / HSK-32
RATIO 1:1
5.000 RPM MAX.

Tooling for : BIGLIA - CMZ - DOOSAN - DUPLOMATIC - EMCO - HAAS - INDEX - MAZAK - MIYANO - MORI SEIKI - NAKAMURA - OKUMA - SAUTER - SCHAUBLIN - SPINNER - ETC.

MADAULA GROUP
Chicago - São Paulo
Barcelona - Bologna - Waghäusel

hello@madaula.com

Specials : welcome

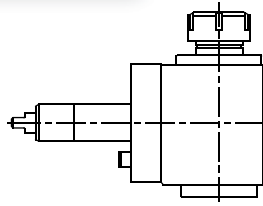


ROMI E-280

Higher precision : 0,005 mm runout

ROMI Ref.

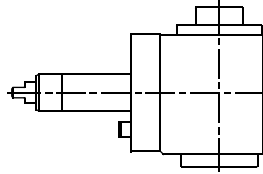
RO.010.280 S49885 **RADIAL**



ER-25
RATIO 1:1
5.000 RPM MAX.

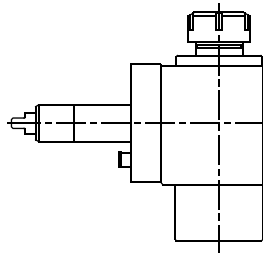


RO.010.280/HSK **RADIAL**



HSK-32
RATIO 1:1
5.000 RPM MAX.

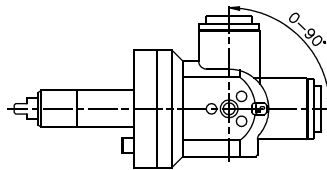
RO.016.280 S78410 **RADIAL WITH HIGH PRESSURE COOLANT THROUGH**



ER-25
RATIO 1:1
5.000 RPM MAX.



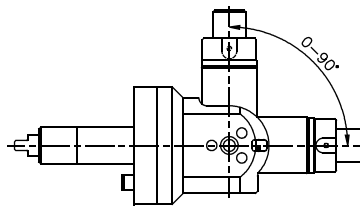
RO.021.280 S78411 **RADIAL ADJUSTABLE**



ER-16A
RATIO 1:1
5.000 RPM MAX.

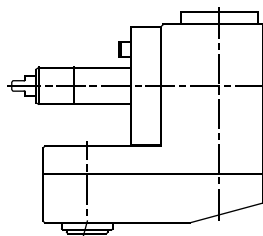


RO.021.280/M **RADIAL ADJUSTABLE**



CYL Ø
RATIO 1:1
5.000 RPM MAX.

RO.051.280 **RADIAL "Y" AXIS**



ER-20A
RATIO 1:1
5.000 RPM MAX.



Tooling for : BIGLIA - CMZ - DOOSAN - DUPLOMATIC - EMCO - HAAS - INDEX - MAZAK - MIYANO - MORI SEIKI - NAKAMURA - OKUMA - SAUTER - SCHAUBLIN - SPINNER - ETC.

MADAULA GROUP
Chicago - São Paulo
Barcelona - Bologna - Waghäusel

hello@madaula.com
Specials : welcome

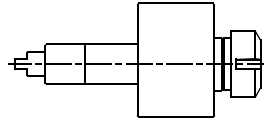


ROMI E-320

Higher precision : 0,005 mm runout

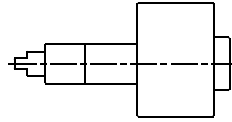
ROMI Ref.

RO.000.320 S55653 **AXIAL**



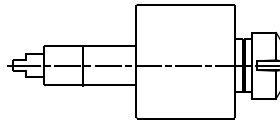
ER-32
RATIO 1:1
5.000 RPM MAX.

RO.000.320/HSK **AXIAL**



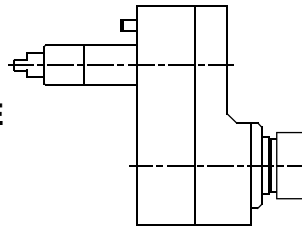
HSK-32
RATIO 1:1
5.000 RPM MAX.

RO.005.320 **AXIAL WITH HIGH PRESSURE COOLANT THROUGH**



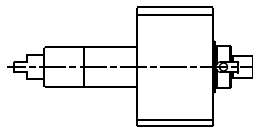
ER-32
RATIO 1:1
5.000 RPM MAX.

RO.006.320 S94972 **AXIAL OFFSET WITH HIGH PRESSURE COOLANT THROUGH**



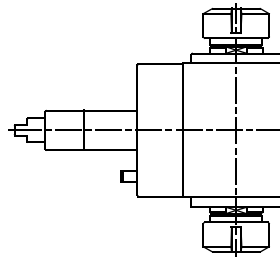
ER-32
RATIO 1:1
5.000 RPM MAX.

RO.038.320 **AXIAL SAW-MILL**



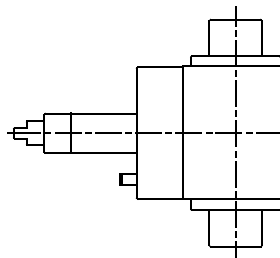
CYL Ø
RATIO 1:1
5.000 RPM MAX.

RO.008.320 S59727 **RADIAL DOUBLE OUTPUT**



ER-32 / ER-32
RATIO 1:1
5.000 RPM MAX.

RO.008.320/HSK **RADIAL DOUBLE OUTPUT**



HSK-40 / HSK-40
RATIO 1:1
5.000 RPM MAX.



Tooling for : BIGLIA - CMZ - DOOSAN - DUPLOMATIC - EMCO - HAAS - INDEX - MAZAK - MIYANO - MORI SEIKI - NAKAMURA - OKUMA - SAUTER - SCHAUBLIN - SPINNER - ETC.

MADAULA GROUP
Chicago - São Paulo
Barcelona - Bologna - Waghäusel

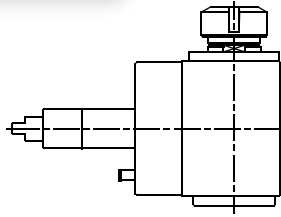
hello@madaula.com
Specials : welcome



ROMI E-320

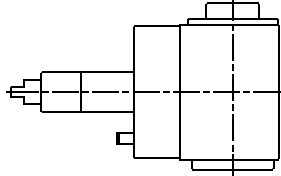
ROMI Ref.

RO.010.320 S55656 **RADIAL**



Higher precision : 0,005 mm runout

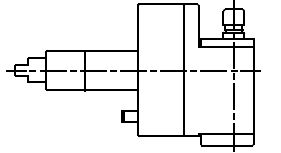
RO.010.320/HSK **RADIAL**



ER-32
RATIO 1:1
5.000 RPM MAX.



RO.013.320 **RADIAL SPEEDER**

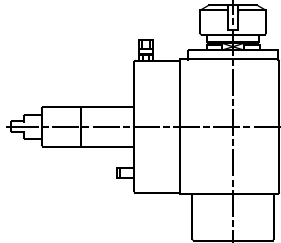


HSK-40
RATIO 1:1
5.000 RPM MAX.

ER-11
RATIO 1:4
15.000 RPM MAX.

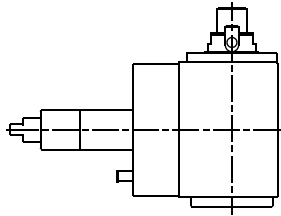


RO.016.320 S75368 **RADIAL WITH HIGH PRESSURE COOLANT THROUGH**



ER-32
RATIO 1:1
5.000 RPM MAX.

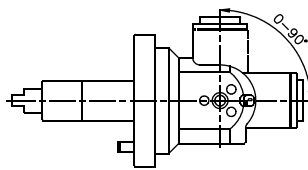
RO.037.320 **RADIAL SAW-MILL**



CYL Ø
RATIO 1:1
5.000 RPM MAX.

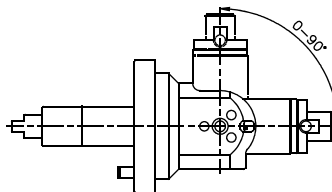


RO.021.320 S78413 **RADIAL ADJUSTABLE**



ER-16A
RATIO 1:1
5.000 RPM MAX.

RO.021.320/M **RADIAL ADJUSTABLE**



CYL Ø
RATIO 1:1
5.000 RPM MAX.



Tooling for : BIGLIA - CMZ - DOOSAN - DUPLOMATIC - EMCO - HAAS - INDEX - MAZAK - MIYANO - MORI SEIKI - NAKAMURA - OKUMA - SAUTER - SCHAUBLIN - SPINNER - ETC.

MADAULA GROUP
Chicago - São Paulo
Barcelona - Bologna - Waghäusel

hello@madaula.com
Specials : welcome

