

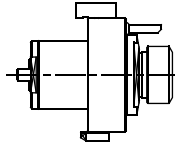
OKUMA

LB 2000-2500-3000 EX M7MY
LB 3000 EX MW/MYW
GENOS L300-MW

Higher precision : 0,005 mm runout

OK.000.LB2000

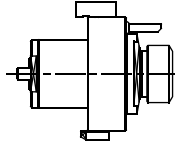
AXIAL



ER-32
RATIO 1:1
6.000 RPM MAX.

OK.005.LB2000

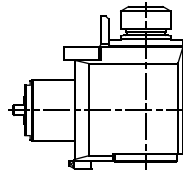
**AXIAL WITH
HIGH PRESSURE
COOLANT THROUGH**



ER-32
RATIO 1:1
6.000 RPM MAX.
50 bar MAX.

OK.010.LB2000

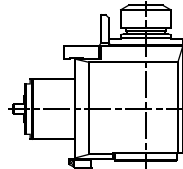
RADIAL



ER-32
RATIO 1:1
6.000 RPM MAX.

OK.016.LB2000

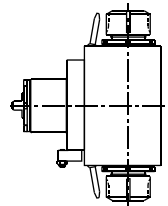
**RADIAL WITH
HIGH PRESSURE
COOLANT THROUGH**



ER-32
RATIO 1:1
6.000 RPM MAX.
80 bar MAX.

OK.008.LB2000

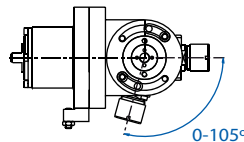
**RADIAL DOUBLE
OUTPUT**



ER-32
RATIO 1:1
6.000 RPM MAX.

OK.021.LB2000

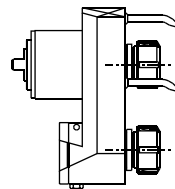
**RADIAL
ADJUSTABLE**



ER-25
RATIO 1:1
6.000 RPM MAX.

OK.004.LB2000

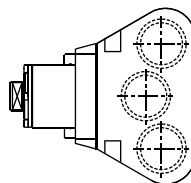
**AXIAL DOUBLE
OUTPUT**



ER-25
RATIO 1:1
6.000 RPM MAX.

OK.023.LB2000

RADIAL MULTIPLE



ER-25
RATIO 1:1
6.000 RPM MAX.



Tooling for : BIGLIA - CMZ - DOOSAN - DUPLOMATIC - EMCO - HAAS - INDEX - MAZAK - MIYANO - MORI SEIKI - NAKAMURA - OKUMA - SAUTER - SCHAUBLIN - SPINNER - ETC.

MADAULA GROUP

Chicago - São Paulo

Barcelona - Bologna - Waghäusel

hello@madaula.com

Specials : welcome

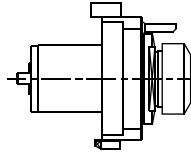


OKUMA LB 4000 EX M/MY

Higher precision : 0,005 mm runout

OK.000.LB4000

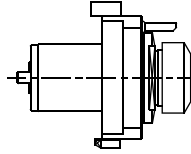
AXIAL



ER-40
RATIO 1:1
6.000 RPM MAX.

OK.005.LB4000

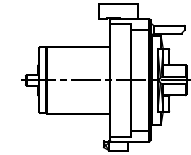
**AXIAL WITH
HIGH PRESSURE
COOLANT THROUGH**



ER-40
RATIO 1:1
6.000 RPM MAX.
50 bar MAX.

OK.038.LB4000

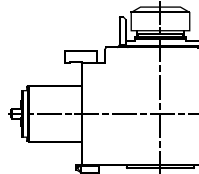
AXIAL SAW-MILL



Ø 27
RATIO 1:1
6.000 RPM MAX.

OK.010.LB4000

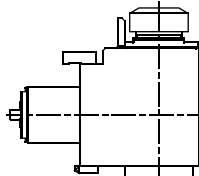
RADIAL



ER-40
RATIO 1:1
6.000 RPM MAX.

OK.016.LB4000

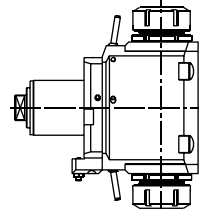
**RADIAL WITH
HIGH PRESSURE
COOLANT THROUGH**



ER-40
RATIO 1:1
6.000 RPM MAX.
80 bar MAX.

OK.008.LB4000

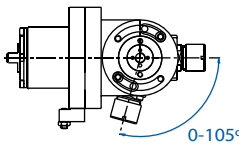
**RADIAL DOUBLE
OUTPUT**



ER-40
RATIO 1:1
6.000 RPM MAX.

OK.021.LB4000

**RADIAL
ADJUSTABLE**



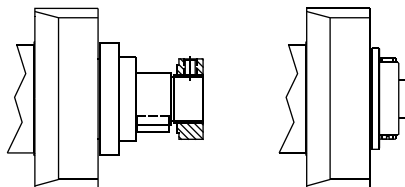
ER-25
RATIO 1:1
6.000 RPM MAX.



SPECIAL SPINDLE EXECUTIONS:

Also available for:

**LB 2000 - 2500 - 3000 EX M / MY
LB 3000 EX MW / MYW**



ARBOR MILL

HSK-40

Tooling for : BIGLIA - CMZ - DOOSAN - DUPLOMATIC - EMCO - HAAS - INDEX - MAZAK - MIYANO - MORI SEIKI - NAKAMURA - OKUMA - SAUTER - SCHAUBLIN - SPINNER - ETC.

MADAULA GROUP

Chicago - São Paulo

Barcelona - Bologna - Waghäusel

hello@madaula.com

Specials : welcome

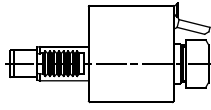


OKUMA LB-10M/LB-200M
ECO ES-L8IIM

Higher precision : 0,005 mm runout

OK.000.LB200

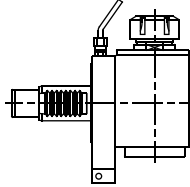
AXIAL*



ER-25
RATIO 1:1
6.000 RPM MAX.

OK.010.LB200

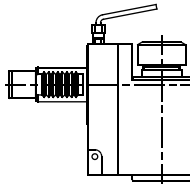
RADIAL*



ER-25
RATIO 1:1
6.000 RPM MAX.

OK.011.LB200

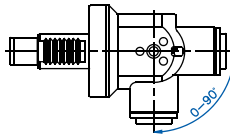
**RADIAL
SET-BACK***



ER-25
RATIO 1:1
6.000 RPM MAX.

OK.021.LB200

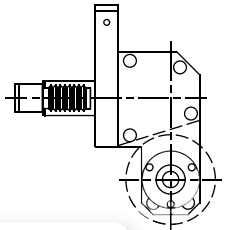
**RADIAL
ADJUSTABLE**



ER-16A
RATIO 1:1
6.000 RPM MAX.

OK.030.LB200

SAW-MILL



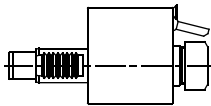
Upon request
RATIO 1:1
3.000 RPM MAX.



OKUMA LT-10M/LT-200M

OK.000.LT10

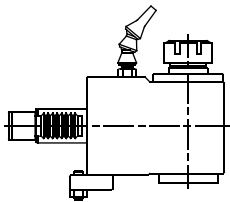
AXIAL*



ER-25
RATIO 1:1
6.000 RPM MAX.

OK.010.LT10

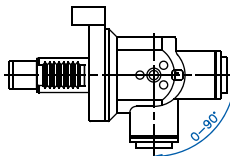
RADIAL*



ER-25
RATIO 1:1
6.000 RPM MAX.

OK.021.LT10

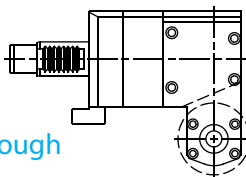
**RADIAL
ADJUSTABLE**



ER-16A
RATIO 1:1
6.000 RPM MAX.

OK.030.LT10

SAW-MILL



Upon request
RATIO 1:1
3.000 RPM MAX.



*Also available with high pressure coolant through

Tooling for : BIGLIA - CMZ - DOOSAN - DUPLOMATIC - EMCO - HAAS - INDEX - MAZAK - MIYANO - MORI SEIKI - NAKAMURA - OKUMA - SAUTER - SCHAUBLIN - SPINNER - ETC.

MADAULA GROUP
Chicago - São Paulo
Barcelona - Bologna - Waghäusel

hello@madaula.com

Specials : welcome

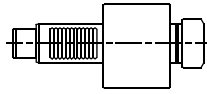


OKUMA LB-15M/LU-15M/LR-15M
LB-300M/CAPTAIN L370M
ECO ES-L1011M/GENOS L300-M

Higher precision : 0,005 mm runout

OK.000.LB300

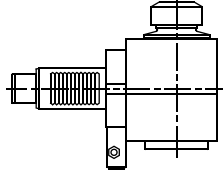
AXIAL*



ER-32
RATIO 1:1
5.000 RPM MAX.

OK.010.LB300

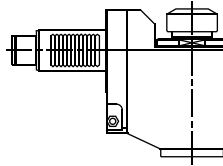
RADIAL*



ER-32
RATIO 1:1
5.000 RPM MAX.

OK.011.LB300

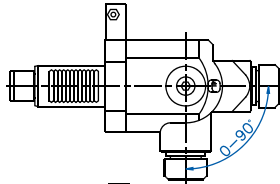
RADIAL SET-BACK*



ER-32
RATIO 1:1
5.000 RPM MAX.

OK.021.LB300

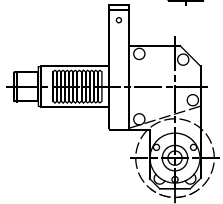
RADIAL ADJUSTABLE



ER-25
RATIO 1:1
5.000 RPM MAX.

OK.030.LB300

SAW-MILL



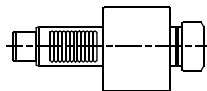
Upon request
RATIO 1:1
3.000 RPM MAX.



OKUMA LT-15M/LT-300M

OK.000.LT15

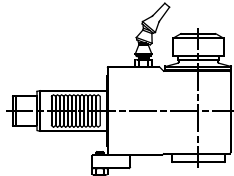
AXIAL*



ER-32
RATIO 1:1
5.000 RPM MAX.

OK.010.LT15

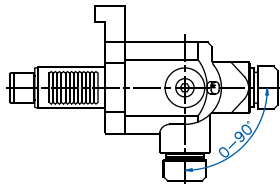
RADIAL*



ER-32
RATIO 1:1
5.000 RPM MAX.

OK.021.LT15

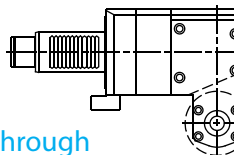
RADIAL ADJUSTABLE



ER-25
RATIO 1:1
5.000 RPM MAX.

OK.030.LT15

SAW-MILL



Upon request
RATIO 1:1
3.000 RPM MAX.



*Also available with high pressure coolant through

Tooling for : BIGLIA - CMZ - DOOSAN - DUPLOMATIC - EMCO - HAAS - INDEX - MAZAK - MIYANO - MORI SEIKI - NAKAMURA - OKUMA - SAUTER - SCHAUBLIN - SPINNER - ETC.

MADAULA GROUP
Chicago - São Paulo
Barcelona - Bologna - Waghäusel

hello@madaula.com
Specials : welcome

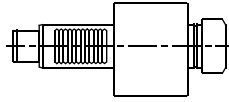


OKUMA LB-25M/LU-25M
LB-400M/CAPTAIN L470-M

Higher precision : 0,005 mm runout

OK.000.LB400

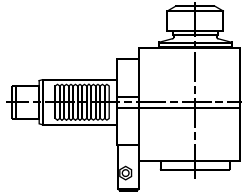
AXIAL*



ER-40
RATIO 1:1
4.000 RPM MAX.

OK.010.LB400

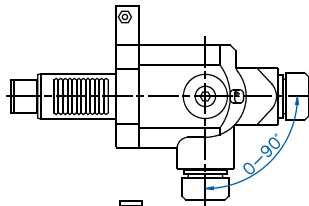
RADIAL*



ER-40
RATIO 1:1
4.000 RPM MAX.

OK.021.LB400

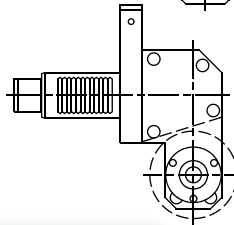
**RADIAL
ADJUSTABLE**



ER-25
RATIO 1:1
4.000 RPM MAX.

OK.030.LB400

SAW-MILL

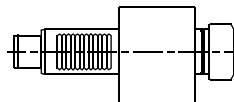


Upon request
RATIO 1:1
2.500 RPM MAX.

OKUMA LT-25M

OK.000.LT25

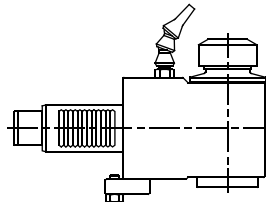
AXIAL*



ER-32
RATIO 1:1
4.000 RPM MAX.

OK.010.LT25

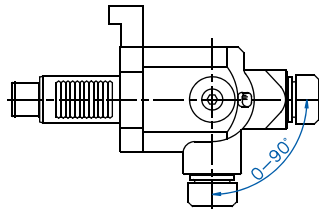
RADIAL*



ER-32
RATIO 1:1
4.000 RPM MAX.

OK.021.LT25

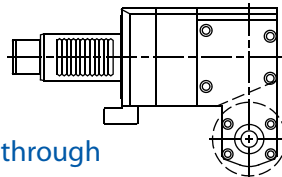
**RADIAL
ADJUSTABLE**



ER-25
RATIO 1:1
4.000 RPM MAX.

OK.030.LT25

SAW-MILL



Upon request
RATIO 1:1
2.500 RPM MAX.

*Also available with high pressure coolant through



Tooling for : BIGLIA - CMZ - DOOSAN - DUPLOMATIC - EMCO - HAAS - INDEX - MAZAK - MIYANO - MORI SEIKI - NAKAMURA - OKUMA - SAUTER - SCHAUBLIN - SPINNER - ETC.

MADAULA GROUP
Chicago - São Paulo
Barcelona - Bologna - Waghäusel

hello@madaula.com

Specials : welcome

