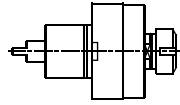


MORI SEIKI NL 1500/2000/2500/3000

Higher precision : 0,005 mm runout

MS.000.NLA

AXIAL

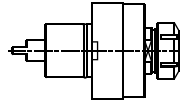


ER-32
RATIO 1:1
6.000 RPM MAX.



MS.000.NLB

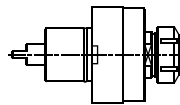
AXIAL



ER-40
RATIO 1:1
6.000 RPM MAX.

MS.005.NL

**AXIAL WITH
COOLANT THROUGH**

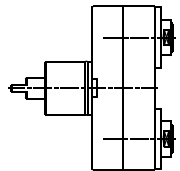


ER-40
RATIO 1:1
6.000 RPM MAX.
10 bar MAX.



MS.023.NL

**AXIAL DOUBLE
OUTPUT**

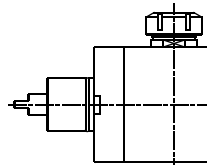


ER-25A
RATIO 1:1
4.000 RPM MAX.



MS.010.NL

RADIAL

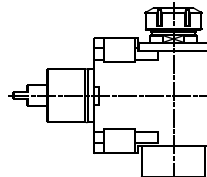


ER-40
RATIO 1:1
6.000 RPM MAX.



MS.016.NL

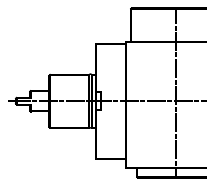
**RADIAL WITH
HIGH PRESSURE
COOLANT THROUGH**



ER-40
RATIO 1:1
6.000 RPM MAX.
70 bar MAX.

MS.016.NLC4

**RADIAL CAPTO C4
HIGH PRESSURE
COOLANT THROUGH**



CAPTO C4
RATIO 1:1
6.000 RPM MAX.
70 bar MAX.

Tooling for : BIGLIA - CMZ - DOOSAN - DUPLOMATIC - EMCO - HAAS - INDEX - MAZAK - MIYANO - MORI SEIKI - NAKAMURA - OKUMA - SAUTER - SCHAUBLIN - SPINNER - ETC.

MADAULA GROUP

Chicago - São Paulo

Barcelona - Bologna - Waghäusel

hello@madaula.com

Specials : welcome

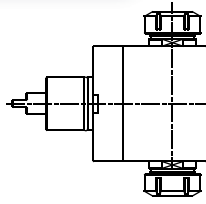


MORI SEIKI NL 1500/2000/2500/3000

Higher precision : 0,005 mm runout

MS.008.NL

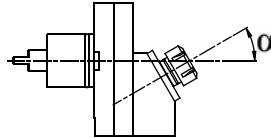
**RADIAL DOUBLE
OUTPUT**



ER-32
RATIO 1:1
6.000 RPM MAX.

MS.012.NL

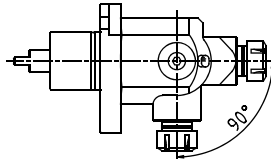
**FIXED ANGLE
(ANY ANGLE)**



ER-25
RATIO 1:1
4.000 RPM MAX.

MS.021.NL

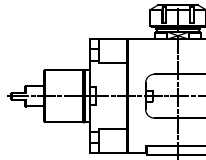
**RADIAL
ADJUSTABLE**



ER-25
RATIO 1:1
4.000 RPM MAX.

MS.051.NLA

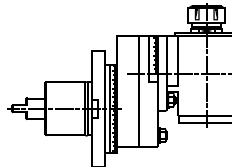
**RADIAL
SWIVELING**



ER-40
RATIO 1:1
4.000 RPM MAX.

MS.051.NLB

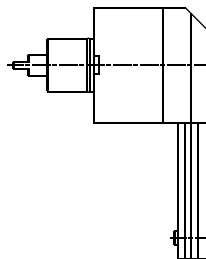
**RADIAL SPECIAL
DOUBLE
SWIVELING**



ER-25
RATIO 1:1
4.000 RPM MAX.

MS.040.NL

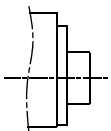
**SPECIAL FOR
INTERNAL WORKS**



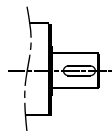
ER-11
RATIO 1:1.5
3.000 RPM MAX.



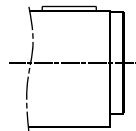
SPECIAL SPINDLE EXECUTIONS:



WELDON



**SHELL
END MILL**



CAPTO

Tooling for : BIGLIA - CMZ - DOOSAN - DUPLOMATIC - EMCO - HAAS - INDEX - MAZAK - MIYANO - MORI SEIKI - NAKAMURA - OKUMA - SAUTER - SCHAUBLIN - SPINNER - ETC.

MADAULA GROUP

Chicago - São Paulo

Barcelona - Bologna - Waghäusel

hello@madaula.com

Specials : welcome

