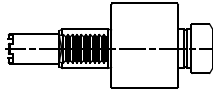


**HAAS SL-20 / SL-30**

Higher precision : 0,005 mm runout

HS.000.SL20

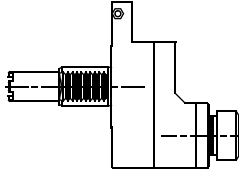
**AXIAL**



ER-32  
RATIO 1:1  
5.000 RPM MAX.

HS.007.SL20

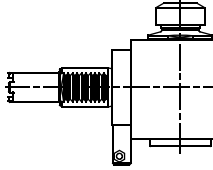
**AXIAL  
OFFSET  
SPEEDER**



ER-32  
RATIO 1:2  
10.000 RPM MAX.

HS.010.SL20

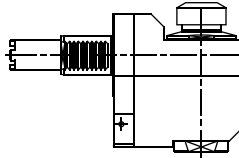
**RADIAL**



ER-32  
RATIO 1:1  
5.000 RPM MAX.

HS.011.SL20

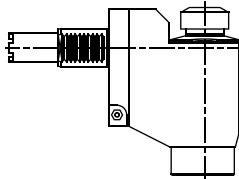
**RADIAL  
SET-BACK**



ER-32  
RATIO 1:1  
5.000 RPM MAX.

HS.018.SL20

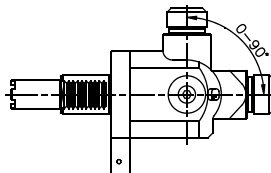
**RADIAL SPEEDER  
WITH HIGH PRESSURE  
COOLANT THROUGH**



ER-32  
RATIO 1:2  
10.000 RPM MAX.

HS.021.SL20

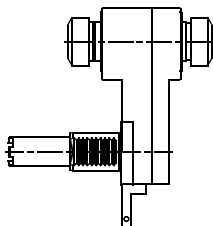
**RADIAL  
ADJUSTABLE**



ER-25  
RATIO 1:1  
5.000 RPM MAX.

HS.032.SL20

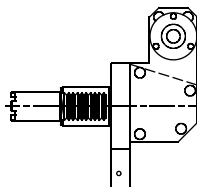
**AXIAL OFFSET  
2 SPINDLES**



ER-32  
RATIO 1:1  
5.000 RPM MAX.

HS.030.SL20

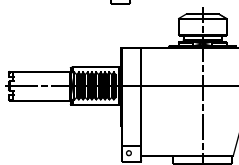
**SAW-MILL**



Ø 16  
RATIO 1:1  
3.000 RPM MAX.

HS.051.SL20

**RADIAL  
"Y" AXIS**



ER-32  
RATIO 1:1  
5.000 RPM MAX.



Tooling for : BIGLIA - CMZ - DOOSAN - DUPLOMATIC - EMCO - HAAS - INDEX - MAZAK - MIYANO - MORI SEIKI - NAKAMURA - OKUMA - SAUTER - SCHAUBLIN - SPINNER - ETC.

**MADAULA GROUP**

Chicago - São Paulo

Barcelona - Bologna - Waghäusel

[hello@madaula.com](mailto:hello@madaula.com)

Specials : welcome

