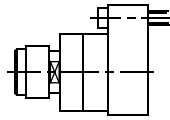


EMCO 425 TCM

Higher precision : 0,005 mm runout

EM.000.425

AXIAL

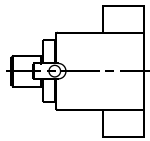


ER-16
RATIO 1:1
2500 RPM MAX



EM.038.425

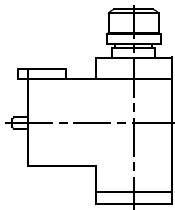
**AXIAL
SAW-MILL**



Ø 16
RATIO 1:1
2500 RPM MAX

EM.010.425

RADIAL

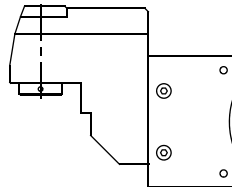


ER-25
RATIO 1:1
5000 RPM MAX



EM.011.425

**RADIAL
SET-BACK**

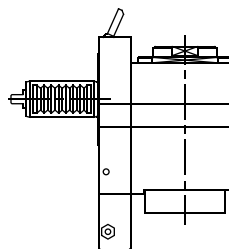


WELDON Ø 10
RATIO 1:1
5000 RPM MAX

EMCO 342 TCM VDI-20

EM.011.342

**RADIAL
SET-BACK**



ER-20A
RATIO 1:1
6000 RPM MAX



Tooling for : BIGLIA - CMZ - DOOSAN - DUPLOMATIC - EMCO - HAAS - INDEX - MAZAK - MIYANO - MORI SEIKI - NAKAMURA - OKUMA - SAUTER - SCHAUBLIN - SPINNER - ETC.

MADAULA GROUP
Chicago - São Paulo
Barcelona - Bologna - Waghäusel

hello@madaula.com

Specials : welcome

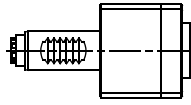


EMCO 332 MC VDI-25

Higher precision : 0,005 mm runout

EM.000.332

AXIAL

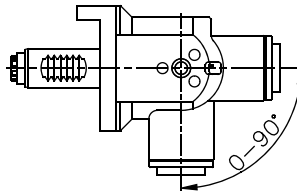


ER-20A
RATIO 1:1
6000 RPM MAX



EM.021.332

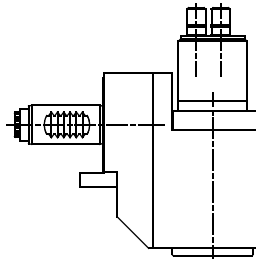
**RADIAL
ADJUSTABLE**



ER-16
RATIO 1:1
6000 RPM MAX

EM.029.332

**RADIAL
MULTISPINDLE**



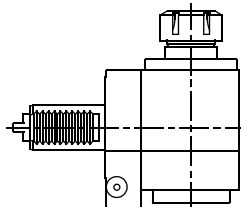
ER-8
RATIO 1.15:1
5000 RPM MAX



EMCO 345 TCM VDI-30 DIN-1809

EM.010.345

RADIAL



ER-25
RATIO 1:1
4000 RPM MAX



Tooling for : BIGLIA - CMZ - DOOSAN - DUPLOMATIC - EMCO - HAAS - INDEX - MAZAK - MIYANO - MORI SEIKI - NAKAMURA - OKUMA - SAUTER - SCHAUBLIN - SPINNER - ETC.

MADAULA GROUP
Chicago - São Paulo
Barcelona - Bologna - Waghäusel

hello@madaula.com

Specials : welcome



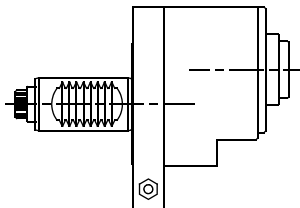
EMCO

365 TCM/465 TCM/E42/E45
VDI-30 DIN-5480

Higher precision : 0,005 mm runout

EM.001.465

**AXIAL
OFFSET**

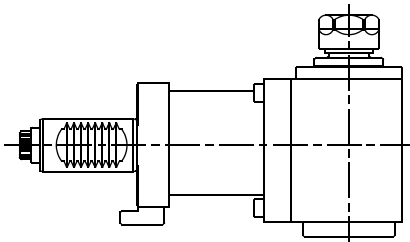


ER-25A
RATIO 1:1
6000 RPM MAX



EM.010.465A

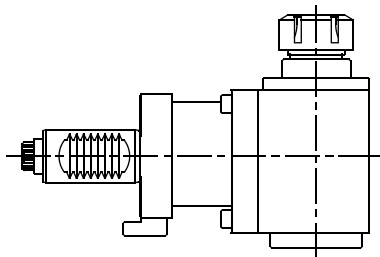
RADIAL



ER-20
RATIO 1:1
6000 RPM MAX

EM.010.465B

RADIAL

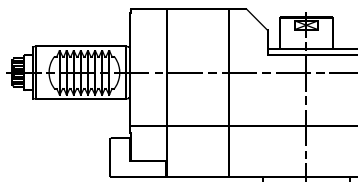


ER-25
RATIO 1:1
6000 RPM MAX



EM.011.465A

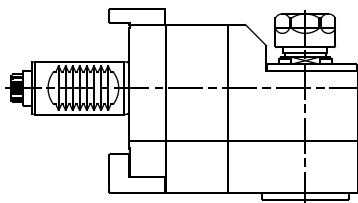
**RADIAL
SET-BACK**



ER-16A
RATIO 1:1
6000 RPM MAX

EM.011.465B

**RADIAL
SET-BACK**



ER-20
RATIO 1:1
6000 RPM MAX



Tooling for : BIGLIA - CMZ - DOOSAN - DUPLOMATIC - EMCO - HAAS - INDEX - MAZAK - MIYANO - MORI SEIKI - NAKAMURA - OKUMA - SAUTER - SCHAUBLIN - SPINNER - ETC.

MADAULA GROUP

Chicago - São Paulo

Barcelona - Bologna - Waghäusel

hello@madaula.com

Specials : welcome



Management System
ISO 9001:2008

www.tuv.com
ID 9105079298

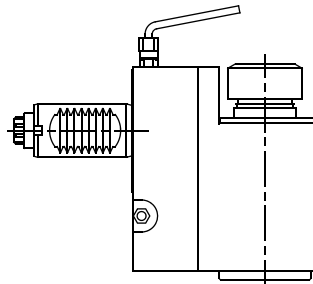
EMCO

365 TCM/465 TCM/E42/E45
VDI-30 DIN-5480

Higher precision : 0,005 mm runout

EM.011.465C

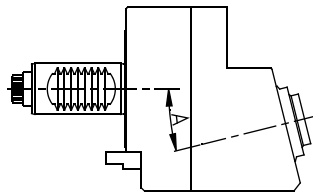
**RADIAL
SET-BACK**



ER-25
RATIO 1:1
6000 RPM MAX

EM.012.465

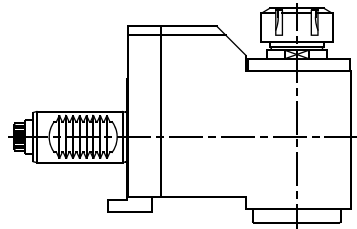
**FIXED ANGLE
(ANY ANGLE)**



ER-25A
RATIO 1:1
6000 RPM MAX

EM.014.465

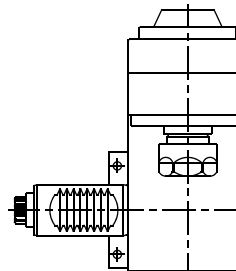
**RADIAL
REDUCER**



ER-25
RATIO 2:1
3000 RPM MAX

EM.015.465

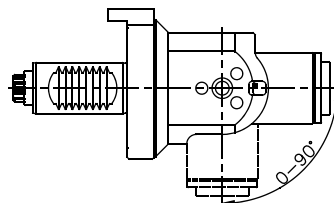
**RADIAL
SPECIAL**



ER-20
RATIO 1:1
6000 RPM MAX

EM.021.465

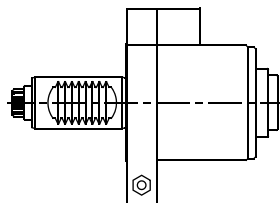
**RADIAL
ADJUSTABLE**



ER-16
RATIO 1:1
6000 RPM MAX

EM.050.465

**AXIAL
"Y" AXIS**



ER-25
RATIO 1:1
6000 RPM MAX



Tooling for : BIGLIA - CMZ - DOOSAN - DUPLOMATIC - EMCO - HAAS - INDEX - MAZAK - MIYANO - MORI SEIKI - NAKAMURA - OKUMA - SAUTER - SCHAUBLIN - SPINNER - ETC.

MADAULA GROUP

Chicago - São Paulo

Barcelona - Bologna - Waghäusel

hello@madaula.com

Specials : welcome

