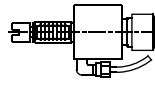


**BARUFFALDI VDI - 16**

Higher precision : 0,005 mm runout

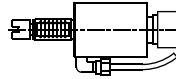
BF.000.16 **AXIAL**



ER-16  
RATIO 1:1  
8.000 RPM MAX.

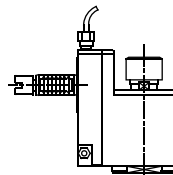


BF.005.16 **AXIAL WITH COOLANT THROUGH**



ER-16  
RATIO 1:1  
8.000 RPM MAX.

BF.011.16 **RADIAL SET-BACK**

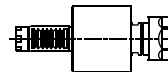


ER-16  
RATIO 1:1  
8.000 RPM MAX.



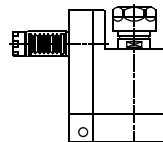
**BARUFFALDI VDI - 20**

BF.000.20 **AXIAL**



ER-20  
RATIO 1:1  
6.000 RPM MAX.

BF.011.20 **RADIAL SET-BACK**

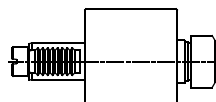


ER-20  
RATIO 1:1  
6.000 RPM MAX.



**BARUFFALDI VDI - 30**

BF.000.30 **AXIAL**



ER-25  
RATIO 1:1  
6.000 RPM MAX.



Tooling for : BIGLIA - CMZ - DOOSAN - DUPLOMATIC - EMCO - HAAS - INDEX - MAZAK - MIYANO - MORI SEIKI - NAKAMURA - OKUMA - SAUTER - SCHAUBLIN - SPINNER - ETC.

**MADAULA GROUP**  
Chicago - São Paulo  
Barcelona - Bologna - Waghäusel

[hello@madaula.com](mailto:hello@madaula.com)

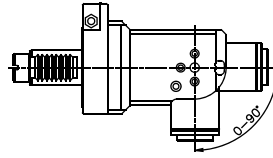
Specials : welcome



**BARUFFALDI VDI - 30**

Higher precision : 0,005 mm runout

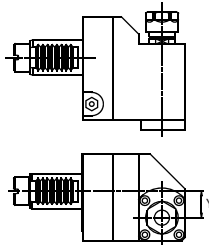
BF.021.30 **RADIAL ADJUSTABLE**



ER-16A  
RATIO 1:3  
6.000 RPM MAX.

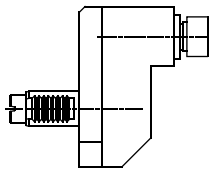


BF.024.30 **RADIAL FIXED "Y" AXIS**



ER-16  
RATIO 1:1  
6.000 RPM MAX.

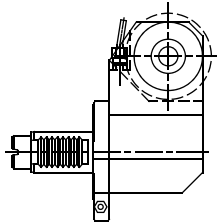
BF.026.30 **AXIAL OFFSET SPEEDER**



ER-20  
RATIO 1:4  
12.000 RPM MAX.



BF.030.30 **SAW CUTTING**

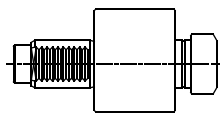


Ø 25  
RATIO 1:1  
6.000 RPM MAX.



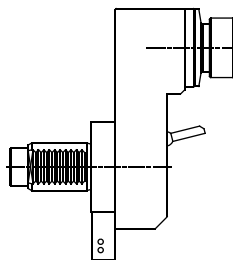
**BARUFFALDI VDI - 40**

BF.000.40 **AXIAL**



ER-32  
RATIO 1:1  
4.000 RPM MAX.

BF.001.40 **AXIAL OFFSET**



ER-32  
RATIO 1:1  
4.000 RPM MAX.



Tooling for : BIGLIA - CMZ - DOOSAN - DIPLOMATIC - EMCO - HAAS - INDEX - MAZAK - MIYANO - MORI SEIKI - NAKAMURA - OKUMA - SAUTER - SCHAUBLIN - SPINNER - ETC.

**MADAULA GROUP**  
Chicago - São Paulo  
Barcelona - Bologna - Waghäusel

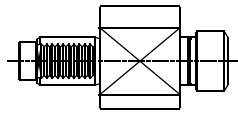
hello@madaula.com  
Specials : welcome



**BARUFFALDI VDI - 40**

Higher precision : 0,005 mm runout

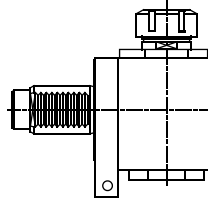
BF.005.40 **AXIAL WITH COOLANT THROUGH**



ER-32  
RATIO 1:1  
4.000 RPM MAX.

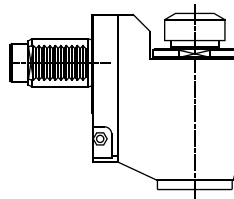


BF.010.40 **RADIAL**



ER-32  
RATIO 1:1  
4.000 RPM MAX.

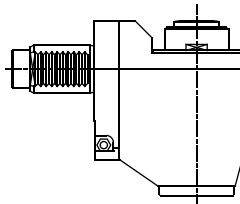
BF.011.40 **RADIAL SET-BACK**



ER-32  
RATIO 1:1  
4.000 RPM MAX.

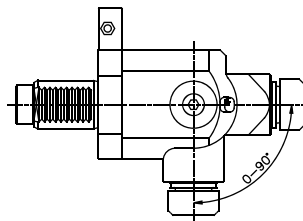


BF.013.40 **RADIAL SPEEDER**



ER-32A  
RATIO 1:3  
10.000 RPM MAX.

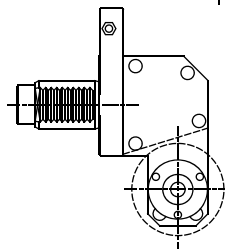
BF.021.40 **RADIAL ADJUSTABLE**



ER-25  
RATIO 1:1  
4.000 RPM MAX.

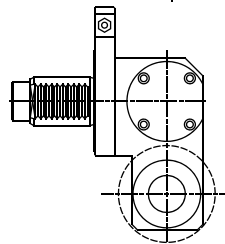


BF.030.40 **SAW CUTTING**



Ø 16  
RATIO 1:1  
4.000 RPM MAX.

BF.030.40/R **SAW CUTTING REDUCER**



Ø 22  
RATIO 4:1  
2.000 RPM MAX.



Tooling for : BIGLIA - CMZ - DOOSAN - DIPLOMATIC - EMCO - HAAS - INDEX - MAZAK - MIYANO - MORI SEIKI - NAKAMURA - OKUMA - SAUTER - SCHAUBLIN - SPINNER - ETC.

MADAULA GROUP

Chicago - São Paulo

Barcelona - Bologna - Waghäusel

hello@madaula.com

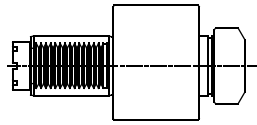
Specials : welcome



**BARUFFALDI VDI - 50**

Higher precision : 0,005 mm runout

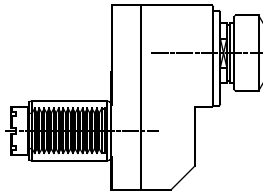
BF.000.50 **AXIAL**



ER-40  
RATIO 1:1  
3.000 RPM MAX.

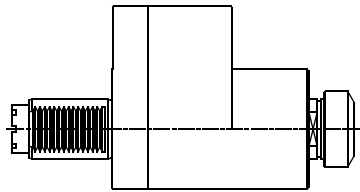


BF.001.50 **AXIAL OFFSET**



ER-40  
RATIO 1:1  
3.000 RPM MAX.

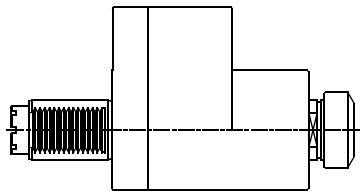
BF.002.50 **AXIAL SPEEDER**



ER-40  
RATIO 1:3  
6.000 RPM MAX.

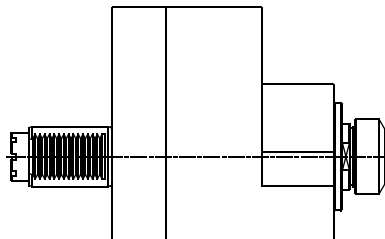


BF.003.50x3 **AXIAL REDUCER**



ER-40  
RATIO 3:1  
3.000 RPM MAX.

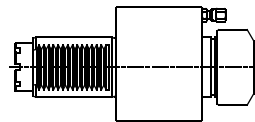
BF.003.50x5 **AXIAL REDUCER**



ER-40  
RATIO 5:1  
3.000 RPM MAX.

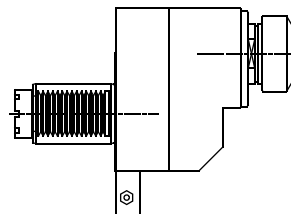


BF.005.50 **AXIAL WITH COOLANT THROUGH**



ER-40  
RATIO 1:1  
3.000 RPM MAX.

BF.006.50 **AXIAL OFFSET WITH HIGH PRESSURE COOLANT THROUGH**



ER-40  
RATIO 1:1  
3.000 RPM MAX.



Tooling for : BIGLIA - CMZ - DOOSAN - DIPLOMATIC - EMCO - HAAS - INDEX - MAZAK - MIYANO - MORI SEIKI - NAKAMURA - OKUMA - SAUTER - SCHAUBLIN - SPINNER - ETC.

MADAULA GROUP

Chicago - São Paulo

Barcelona - Bologna - Waghäusel

hello@madaula.com

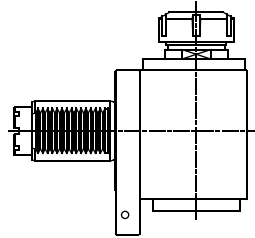
Specials : welcome



**BARUFFALDI VDI - 50**

Higher precision : 0,005 mm runout

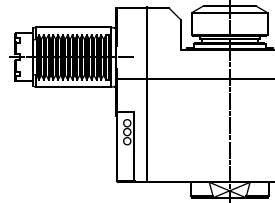
BF.010.50 **RADIAL**



ER-40  
RATIO 1:1  
3.000 RPM MAX.

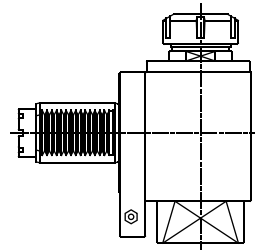


BF.011.50/ER40 **RADIAL SET-BACK**



ER-40  
RATIO 1:1  
3.000 RPM MAX.

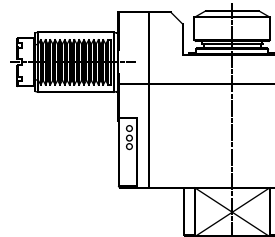
BF.016.50 **RADIAL WITH HIGH PRESSURE COOLANT THROUGH**



ER-40  
RATIO 1:1  
3.000 RPM MAX.



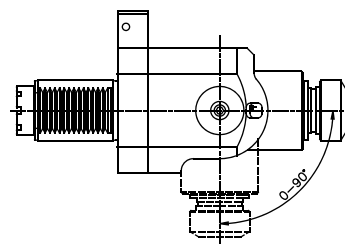
BF.017.50 **RADIAL SET-BACK WITH HIGH PRESSURE COOLANT THROUGH**



ER-40  
RATIO 1:1  
3.000 RPM MAX.



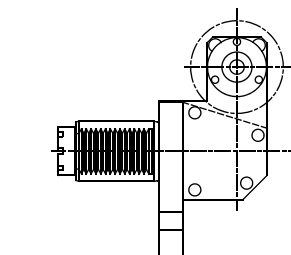
BF.021.50 **RADIAL ADJUSTABLE**



ER-32  
RATIO 1:1  
3.000 RPM MAX.



BF.030.50 **SAW CUTTING**



Ø 25.4  
RATIO 1:1  
3.000 RPM MAX.

Tooling for : BIGLIA - CMZ - DOOSAN - DIPLOMATIC - EMCO - HAAS - INDEX - MAZAK - MIYANO - MORI SEIKI - NAKAMURA - OKUMA - SAUTER - SCHAUBLIN - SPINNER - ETC.

MADAULA GROUP  
Chicago - São Paulo  
Barcelona - Bologna - Waghäusel

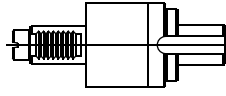
hello@madaula.com  
Specials : welcome



**BARUFFALDI VDI - 30**

Higher precision : 0,005 mm runout

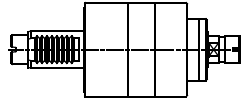
BF.038.30 **AXIAL SAW-MILL**



Ø 32  
RATIO 1:1  
6.000 RPM MAX.

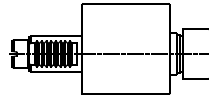


BF.002.30 **AXIAL SPEEDER**



ER-16  
RATIO 1:5  
20.000 RPM MAX.

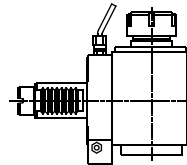
BF.005.30 **AXIAL WITH COOLANT THROUGH**



ER-25  
RATIO 1:1  
6.000 RPM MAX.

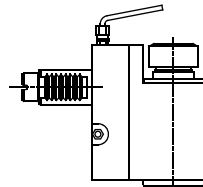


BF.010.30 **RADIAL**



ER-25  
RATIO 1:1  
6.000 RPM MAX.

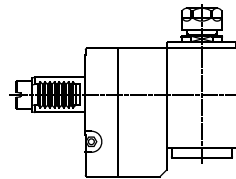
BF.011.30 **RADIAL SET-BACK**



ER-25  
RATIO 1:1  
6.000 RPM MAX.

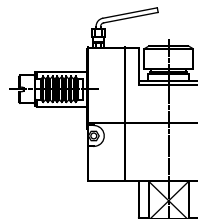


BF.013.30 **RADIAL SPEEDER**



ER-20  
RATIO 1:3  
10.000 RPM MAX.

BF.017.30 **RADIAL SET-BACK WITH HIGH PRESSURE COOLANT THROUGH**



ER-25  
RATIO 1:1  
6.000 RPM MAX.



Tooling for : BIGLIA - CMZ - DOOSAN - DIPLOMATIC - EMCO - HAAS - INDEX - MAZAK - MIYANO - MORI SEIKI - NAKAMURA - OKUMA - SAUTER - SCHAUBLIN - SPINNER - ETC.

MADAULA GROUP

Chicago - São Paulo

Barcelona - Bologna - Waghäusel

hello@madaula.com

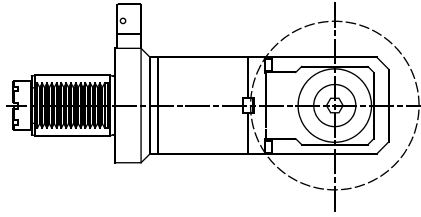
Specials : welcome



**BARUFFALDI VDI - 50**

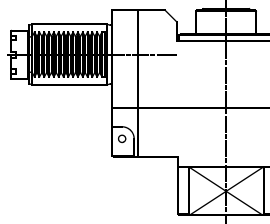
BF.030.50R

**SAW CUTTING  
REDUCER**



BF.051.50

**RADIAL FIXED  
"Y" AXIS**



Higher precision : 0,005 mm runout

Ø 27  
RATIO 1.3:1  
3.000 RPM MAX.



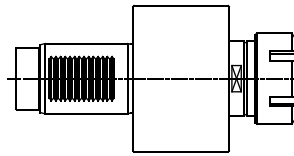
ER-32A  
RATIO 1:1  
3.000 RPM MAX.



**BARUFFALDI VDI - 60**

BF.000.60

**AXIAL**

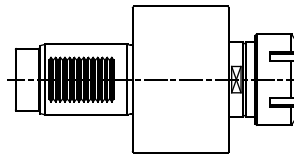


ER-25  
RATIO 1:1  
8.000 RPM MAX.



BF.005.60

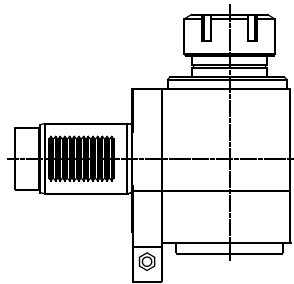
**AXIAL WITH  
COOLANT THROUGH**



ER-25  
RATIO 1:1  
8.000 RPM MAX.

BF.010.60

**RADIAL**

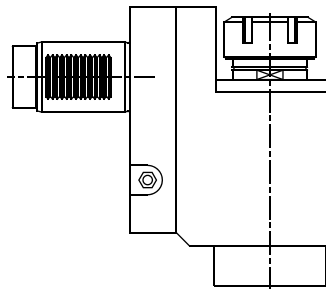


ER-25  
RATIO 1:1  
8.000 RPM MAX.



BF.017.60

**RADIAL SET-BACK  
WITH HIGH PRESSURE  
COOLANT THROUGH**



ER-20  
RATIO 1:1  
8.000 RPM MAX.

Tooling for : BIGLIA - CMZ - DOOSAN - DIPLOMATIC - EMCO - HAAS - INDEX - MAZAK - MIYANO - MORI SEIKI - NAKAMURA - OKUMA - SAUTER - SCHAUBLIN - SPINNER - ETC.

MADAULA GROUP  
Chicago - São Paulo  
Barcelona - Bologna - Waghäusel

hello@madaula.com

Specials : welcome

